

Healthcare Delivery Research Program

Advancing Innovative Research to Improve the Delivery of Cancer-Related Care

The Healthcare Delivery Research Program (HDRP), within NCI’s Division of Cancer Control and Population Sciences, was created in January 2015, to address challenges in cancer care. The name “Healthcare Delivery Research” includes all care delivery processes in both oncology and non-oncology settings. By funding and promoting innovative research, HDRP is working toward its goal of improving the delivery of cancer-related care and reducing the burden of cancer for individuals and populations.

HDRP ORGANIZATION

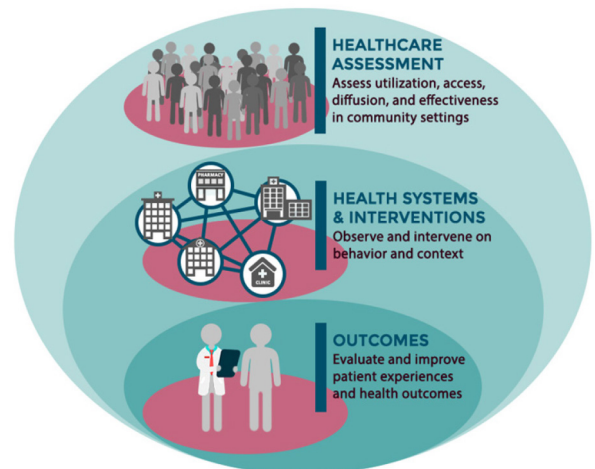
The Healthcare Assessment Research Branch looks at how demographic, social, economic, and health system factors influence access to and provision of cancer care in the population. Studies supported by this branch focus on patterns of care, financial burden, outcomes of healthcare services, and health disparities.

The Health Systems and Interventions Research Branch studies how multilevel contextual factors related to patients, clinicians, practice settings, delivery systems, insurance, and policy influence processes and outcomes of care. Developing and evaluating interventions that target these factors and improve cancer care delivery is of particular interest.

The Outcomes Research Branch promotes research to measure, monitor, evaluate, and improve patient experiences, outcomes, and quality of care across the cancer continuum. This includes facilitating a greater understanding of the perspectives of cancer patients, survivors, caregivers, and families, and integrating that knowledge into healthcare delivery systems.

Healthcare Delivery Research Program

Advancing innovative research to improve the delivery of cancer-related care.



RESEARCH PRIORITY AREAS (include but are not limited to)

- **Health Equity and Social Determinants of Health** Research to understand adverse effects on those who systematically experience obstacles to health that are historically linked to exclusion, which can impact the delivery of quality cancer care and outcomes.
- **Cancer Caregiving** Research to understand and address the social, economic, structural, and institutional contexts and processes that contribute to health disparities across the cancer control continuum.
- **Cancer Health Economics** Research focused on the application of health economics theory and models to cancer prevention and screening, diagnosis, treatment, survivorship, and end-of-life care.
- **Healthcare Teams and Cancer Care Delivery** Research to enhance delivery of multidisciplinary cancer care via structure and teamwork, evidence-based interventions, and an understanding of team-based care structure and process for equitable access.
- **Cancer Screening, Early Detection, & Prevention** Research to optimize cancer prevention, detection, and screening processes to improve patient outcomes.
- **Methods & Measurements** Data methods and measurement tools used in cancer care delivery across different research settings.
- **Telehealth and Digital Health** Research focused on improving cancer care by integrating telehealth and digital health innovations into care delivery models across the cancer control continuum.

Healthcare Delivery Research Program

DATA, TOOLS, AND INITIATIVES

HDRP supports the development and maintenance of data and tools that can be used to address research questions at various points across the cancer control continuum. HDRP staff also lead large initiatives that inform our understanding of cancer screening, cancer care, factors influencing care, and outcomes of care. Examples include:

Surveillance, Epidemiology, and End Results (SEER)-Linked Data

- SEER-Consumer Assessment of Healthcare Providers and Systems (CAHPS)
- SEER-Medicare
- SEER-Medicaid
- SEER-Medicare Health Outcomes Survey (MHOS)

Research Initiatives

- Interagency Consortium to Promote Health Economics Research on Cancer (HEROIC)
- HPV Vaccine Uptake
- NCI Community Oncology Research Program (NCORP) Cancer Care Delivery Research

Other Data Resources

- National Health Interview Survey (NHIS) Cancer Control Supplement (CCS)
- Medical Expenditure Panel Survey and Experiences with Cancer Survivorship Supplement
- Patterns of Care Studies
- Social Determinants of Health
- PROSPR DataShare
- POC*Explorer

Measurement Tools

- HealthMeasures: A Patient-Centered Assessment Resource
- Patient-Reported Outcomes version of the Common Terminology Criteria for Adverse Events (PRO-CTCAE)

FUNDING OPPORTUNITIES

Information about our current portfolio as well as available funding opportunity announcements can be found on the HDRP website. Several examples include:

- NOSI: Administrative Supplement to Support Health Policy Research in Cancer Prevention and Control, NOT-CA-23-044
- NOSI: Administrative Supplements to Initiate or Augment Outreach to and Inclusion of Sexual Gender Minority (SGM) Populations, NOT-CA-23-032
- NOSI: Increasing Uptake of Evidence-based Screening in Diverse Populations Across the Lifespan, NOT-OD-22-178
- NOSI: Addressing Cancer-Related Financial Hardship to Improve Patient Outcomes, NOT-CA-22-045
- NOSI: Disparities Affecting Healthcare Utilization and Health Outcomes Among Childhood Cancer Survivors, NOT-CA-22-029
- NOSI: Research on Interprofessional Teamwork and Coordination During Cancer Diagnosis and Treatment, NOT-CA-22-014
- Patient-Clinician Relationship: Improving Health Outcomes in Populations that Experience Health Care Disparities - PAR-22-064
- NOSI: Telehealth in Cancer Care, NOT-CA-21-043
- NOSI: Navigating Pediatric to Adult Health Care: Lost in Transition, NOT-HD-21-027
- NOSI: New Information Technology-Enabled Care Delivery Models to Improve Depression Care in Cancer, NOT-CA-21-085
- NOSI: Research to Improve the Interpretation of Patient-reported Outcomes at the Individual Level for Use in Clinical Practice, NOT-OD-20-079
- NOSI: Research on Oral Anticancer Agents in the Contexts of Utilization, Adherence, and Health Care Delivery, NOT-CA-20-026

CONNECT WITH US!



<http://healthcaredelivery.cancer.gov>



[@NCICareDelivRes](https://twitter.com/NCICareDelivRes)



NCIHDRP@mail.nih.gov



<https://list.nih.gov> (search: HDRP E-NEWS)