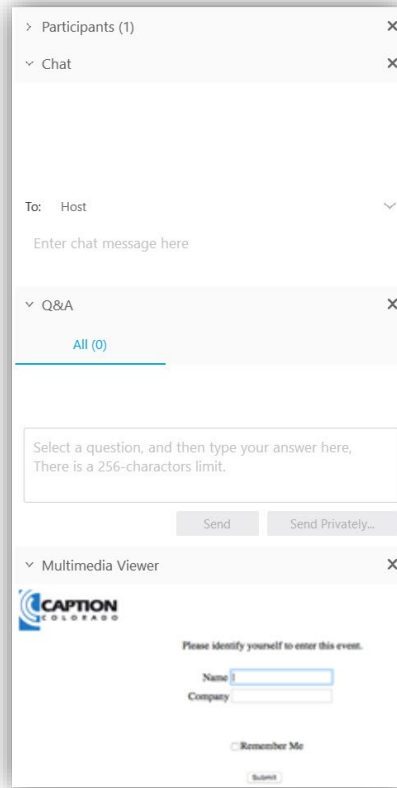


Linking the Provider Recommendation to Adolescent HPV Vaccine Uptake R01, R21, R03

Healthcare Delivery Research Program
Division of Cancer Control and Population Sciences

Using WebEx and webinar logistics



- All lines will be in listen-only mode
- Closed captioning is available by selecting the Media Viewer Panel
- Submit questions at any time during the presentation. Type into the Q&A or Chat Panel and select Host from the drop down
- A moderator will ask the question on your behalf
- This webinar is being recorded

Webinar presenters

Sarah C. Kobrin, PhD, MPH

- Chief, Health Systems and Interventions Research Branch (HSIRB)
- Healthcare Delivery Research Program
- Division of Cancer Control and Population Sciences
- National Cancer Institute



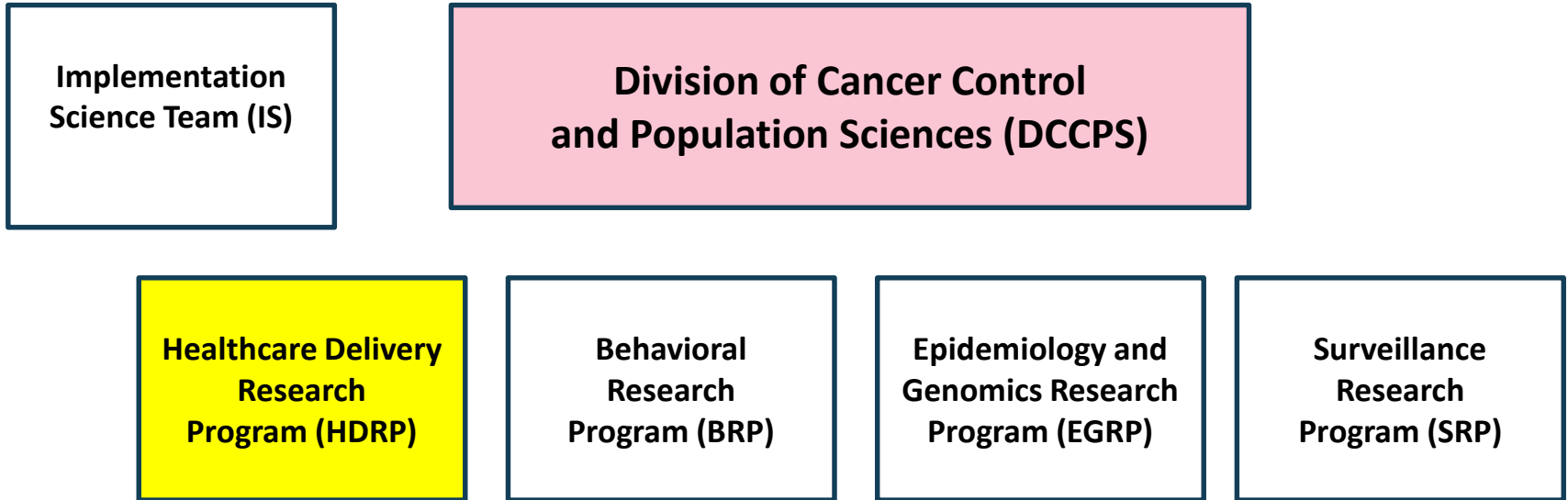
Outline

- Background on NCI, grants processes, and this PAR
- FOA Details -- review and updates
- Questions
 - Submit in the chat box at any time
 - Please don't ask about specific aims or grant application
 - Contact Sarah later to talk about your own research (Sarah.Kobrin@nih.gov)

Background

*Advancing Cancer Care Delivery Research
in the Next Decade*

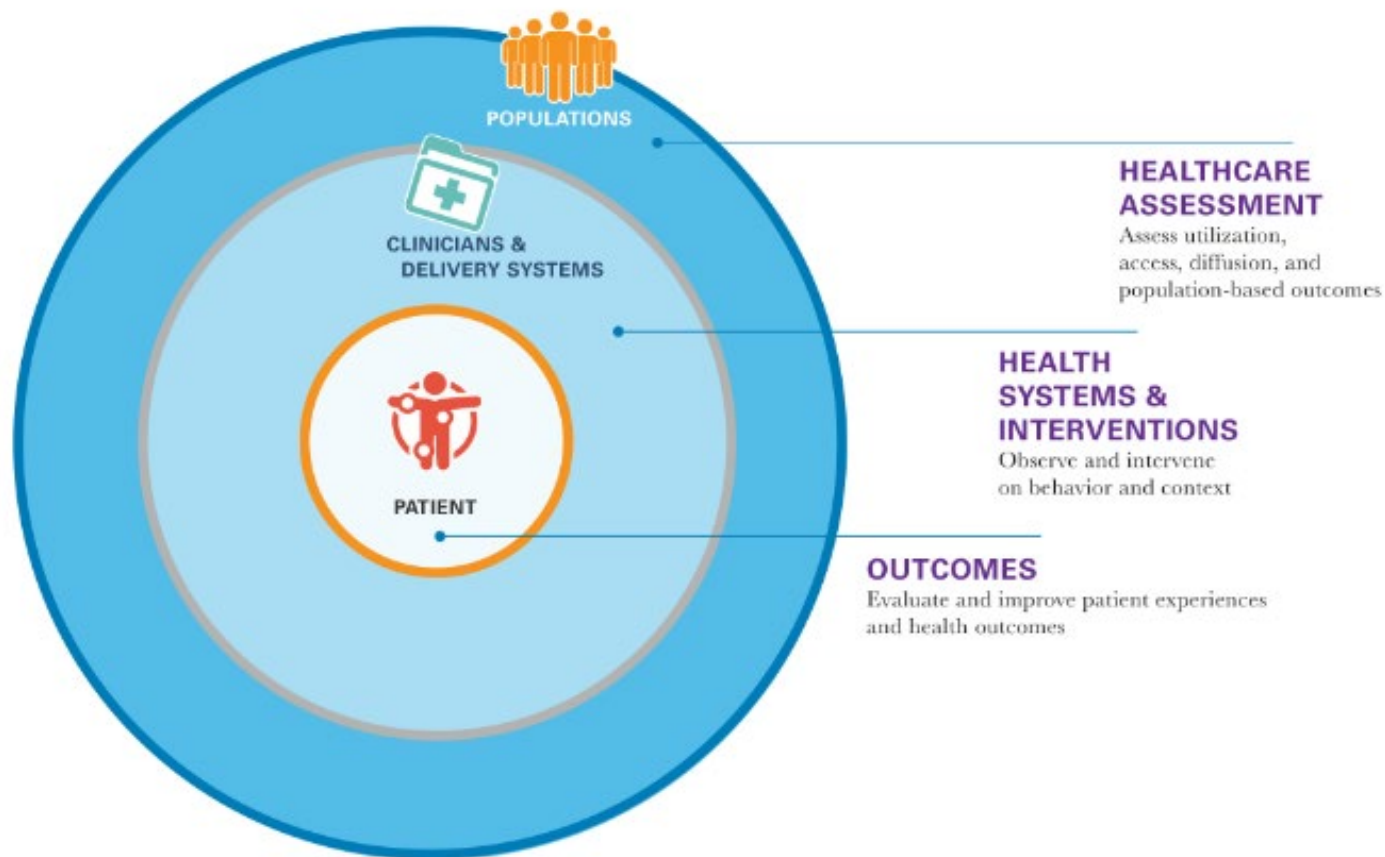
NCI DCCPS organizational structure




<https://healthcaredelivery.cancer.gov>

HEALTHCARE DELIVERY RESEARCH PROGRAM

Advancing innovative research to improve the delivery of cancer-related care



How we fund grants

- Although most of our portfolio consists of investigator-initiated (unsolicited) grants, HDRP also supports grant applications in specific areas of interest
 - Requests for Applications (RFA)
 - Identifies the specific receipt date(s), the estimated amount of funds earmarked for the initiative, the number of awards likely to be funded, and any specific criteria for scientific peer review; applications received in response to a particular RFA are reviewed by an Institute's Scientific Review Group
 - Program Announcements (PA)
 - Most PA applications are submitted  a standing receipt date and are reviewed with all other applications received at that time using standard peer-review processes
 - Program Announcement (PAR)
 - Program announcements with special receipt, referral, and/or review considerations

Grant mechanisms – R01, R21, R03

NIH Research Project Grant (R01)	NIH Exploratory/Developmental Grant (R21)	NIH Small Grant Program (R03)
<ul style="list-style-type: none">▪ Support a discrete, specified, and circumscribed research project▪ Most commonly used grant program▪ No specific dollar limit<ul style="list-style-type: none">▪ Advance permission required for \geq\$500K direct costs in any year▪ 3-5 years funding	<ul style="list-style-type: none">▪ Supports new, exploratory, and developmental research projects▪ Sometimes used for pilot and feasibility studies▪ Preliminary studies are discouraged▪ Combined budget for direct costs for the two-year project period usually may not exceed \$275,000▪ Up to 2 years funding▪ No parent announcement (must use a PAR or RFA)	<ul style="list-style-type: none">▪ Supports limited funding for a short period of time for a variety of types of projects, including: pilot or feasibility studies, collection of preliminary data, secondary analysis of existing data, small, self-contained research projects, development of new research technology, etc.▪ Limited to two years of funding▪ Direct costs generally up to \$50,000 per year▪ Not renewable

FOA Details

*Linking the Provider Recommendation to
Adolescent HPV Vaccine Uptake*

Purpose of PAR

How the healthcare delivery **system enhances or inhibits ...**
... the effectiveness of a **provider's recommendation** of the adolescent human papillomavirus (HPV) vaccine.

Characteristics of the provider, parent/patient, and clinical setting, can all affect whether a provider makes a recommendation, and whether that recommendation results in uptake of the HPV vaccine.

This research requires expertise in **cancer prevention, adult and childhood behavior, immunization promotion, and healthcare delivery.**

Types of studies

To identify the provider, patient/parent, and practice-level **characteristics** that might enhance or inhibit vaccine uptake among children ages 11-12 in the U.S.

To identify the **mechanisms** by which these characteristics operate to enhance or inhibit vaccine uptake

Develop and test **interventions** to increase vaccine uptake by targeting identified characteristics at two or more of these levels

Key elements

Collect **primary data in a clinical setting** where HPV vaccine is recommended and administered to adolescents

Focus on vaccination of both **boys and girls**, unless a compelling reason is provided for excluding one of these groups

Focus on opportunities to **close significant disparities** in HPV vaccination, as demonstrated by HPV vaccine first dose uptake lower than the adolescent girls' national average of 60%

Consider and measure characteristics of all three levels (provider, patient/parent, and practice).

Read the FOAs very carefully!

- PAR-19-360 (R01); PAR-19-359 (R03); PAR-19-358 (R21)
- Open Date (Earliest Submission Date): **September 16, 2019**
- Application Due Dates: **Standard Submission Dates Apply**
- Letter of Intent Due Date: **N/A**
- Earliest Start Date: **Standard Dates Apply**
- Expiration Date: **July 17, 2022**
- Start the process early! Allow time for registration in the System for Award Management, eRA Commons, and Grants.gov

Resources

- Today's webinar and FAQ will be posted on our website: <https://healthcaresdelivery.cancer.gov/media>
- Connect with Dr. Sarah Kobrin early!
 - Email: sarah.kobrin@nih.gov
- HDRP Staff listing: <https://healthcaresdelivery.cancer.gov/about/staff>

Stay connected with us!

Subscribe to our email listserv using the link on our homepage:
healthcaredelivery.cancer.gov



Follow us on Twitter: [@NCICareDelivRes](https://twitter.com/NCICareDelivRes)

Questions



U.S. Department of Health & Human Services
National Institutes of Health | National Cancer Institute

<https://healthcaresdelivery.cancer.gov/media>

1-800-4-CANCER

Produced September 2017